

PRODUCT FUNCTION

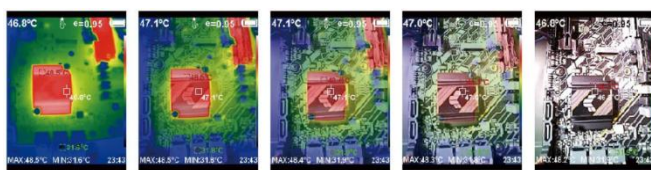
- Supports surface temperature measurement and real-time thermal image analysis.

PRODUCT FEATURES

- The emissivity can be adjusted to improve the measurement accuracy of objects with semi-reflective surfaces.
- The maximum and minimum temperature cursors guide users to the hottest and coldest areas in the thermal image.
- Selectable color palettes are available.



7 color palettes



Adjustable image sharpness



TECHNICAL SPECIFICATION

Model	EM384	EM640
Power Supply	Built-in rechargeable 26650 lithium battery, 5000 mAh	
LCD Size	3.5-inch (640 × 480)	
Infrared Resolution	384 x 288	640 x 512
NETD	≤ 50 mK @25°C, @F/1.0	≤ 40 mK @F/1.0
Color Palettes	5 colors (Rainbow / Iron / Blue / White Hot / Black Hot)	7 colors (Rainbow / Iron / Blue / White Hot / Black Hot / Red Hot / Low Light)
Equipment Storage	16G (user available approx. 13.4G)	32G (user available approx. 30G)
Menu Languages	Chinese, English, Spanish	Chinese, English
Power Interface	Type-C	
Infrared Detector Type	Vanadium Oxide (VOx) uncooled infrared focal plane	
Infrared Spectral Band	8 - 14 μm	
Pixel Size	12μm	
Lens Focal Length	9.1mm	
IFOV	1.32mrad	
Field Angle	29.2° x 21.7°	
Focus Adjustment Method	Manual focus	
Temperature Measurement Range	Low range: -20°C ~ +120°C (-4°F - 248°F); High range: 120°C ~ +550°C (248°F - 1022°F)	
Temperature Measurement Accuracy	ETB384: -15°C to 550°C ±2°C or ±2%; -20°C to -15°C ±4°C ETB640: -15°C to 550°C ±2°C or ±2%; -20°C to -15°C ±2°C	
Temperature Resolution	0.1°C	
Temperature Measurement Mode	Center point / Hot-cold spot tracking	
Emissivity Setting	Adjustable from 0.01 - 1.00	
Thermal Imaging Frame Rate	≤ 25Hz	
Visible Light Resolution	640 x 480	
Image Display Modes	IR / Visible light / Fusion / Picture-in-Picture (PIP)	
Image/Video Format	JPG/MP4	

Guangdong ETCR Electronic Technology Co.,Ltd

10th F, U-S, Liandong Intelligent Manufacture Park,
No. 105, Shilong N. Road, Nanhai, Foshan, China

Tel: (86-757)66860936
info@etcr.net
www.etcrmeter.com

Note! Photographs in this catalogue may slightly differ from the instruments at the time of delivery.
Subject to technical change without notice.

ETCR METER[®]

GUANGDONG ETCR ELECTRONIC TECHNOLOGY CO.,LTD.

Image / Video Export Method	USB connection to computer for export	
Image Analysis Function	Support PC offline analysis	
Working Time	≥ 4 hours	
Automatic shutdown time	5 min / 10 min / 20 min / Disable	
Working Environment	Working: -10°C ~ +50°C; Storage: -20°C ~ +60°C; 10% ~ 85%RH (non-condensing)	
Instrument Dimensions	256mm x 95.8mm x 128.9mm	
Weight	Approx. 1.1 kg (include accessories)	Approx. 2.02 kg (include accessories)
Accessories	Instrument*1PC Type-C charging cable*1PC; Tool bag*1PC (only ETB384); Hard case*1PC (only ETB640)	

Guangdong ETCR Electronic Technology Co.,Ltd

10th F, U-S, Liandong Intelligent Manufacture Park,
No. 105, Shilong N. Road, Nanhai, Foshan, China

Tel: (86-757)66860936
info@etc.net
www.etcrometer.com

Note! Photographs in this catalogue may slightly differ from the instruments at the time of delivery.
Subject to technical change without notice.